



Tianjin LATINO Environmental Technology Co., Ltd.

---

Tel: +86 15502267935  
Os: <http://www.tianjinlatino.com>  
Email: [tianjinlatino@gmail.com](mailto:tianjinlatino@gmail.com)  
Add: No. 4th, Hexu Road, Sino-Singapore  
Tianjin Eco-City, Binhai New Area, Tianjin  
City, China.

# BUSINESS BROCHURE

| 2022



# Contents

Company Profile

Fill

Spray Nozzle

Drift Eliminator

Gardening Water Defector

Water Defector

Noise Attenuator

FRP Profile

Other Relevant Products



# About us

Tianjin LATINO Environmental Technology CO.,Ltd.is a professional cooling tower components supplier based on our own manufacturing factory in China. Latino has an experienced team in quality and project implement to support the purchasing activities of overseas customers. Our main products are Film Fill, drift eliminator and spray system, UPVC distribution pipes, FPR winding splash pipe, FRP profile parts, FRP gratings, Fan stack, band & clamp, etc.; or supply the customized products based on customer requirements. We mainly export to Germany, Australia, UK, Indonesia, Thailand, Belgium, France, Poland, India, Malaysia, Singapore and New Zealand, etc.

Here is the best working platform for to develop your own potential and contribution to the company! For more information, please kindly visit the following website:

<http://www.tianjinlatino.com>

*We are customer-oriented,  
rely on the unity of all  
employees and the spirit of  
mutual cooperation,  
continue to operate forever,  
continue to improve,  
constantly pursue  
high-quality quality and  
improve the after-sales  
service system.*



# Fill

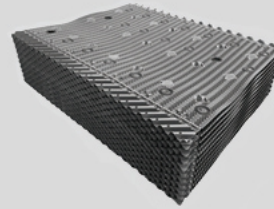
Cooling Tower Fill, also called cooling tower infill film media. It is one of the most important components in cooling tower. Its function is to increase the exchange area of the gas and working fluid in order to achieve the cooling requirement. The working fluid is distributed onto the fill and spread into a thin film uniformly, by increasing the air-media interface and allowing waste heat to evaporate at an accelerated rate. With the development of the plastic industry, current tower drench water plastic packing "S" shape ladder wave, inclined corrugated fills, which has the advantages of heat dissipation, durable, good performance, ventilated small resistance, etc. Based on the easy and other advantages it is widely used in different types of large, medium and small cooling towers.

LATINO could supply a wide range of synthetic cooling tower fill for the cooling towers, such as the counter flow and cross flow cooling tower fill. For more details, please kindly reference the following catalogue.

All the fills can be supplied in blocks of various sizes or in sheets. As to limit the transportation costs and actual demand, we usually provide the best suggestion for the ordering and shipping method.

## Main Advantages

- Increased cooling efficiency
- Very low cost
- Easy installment and maintenance
- Resistant against almost all chemical and biological agents



NO: 9601

ITEM: Cross flow cooling tower film fill

Material: PVC

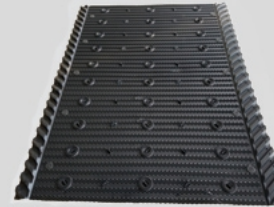
Thickness: 0.3-0.6

Density: 1.40-1.42

Sheet pitch: 19

Width: 750,15,1050,1520 ,1220

Length: customized



NO: 9602

ITEM: Cross flow cooling tower film fill

Material: PVC

Thickness: 0.3-0.6

Density: 1.40-1.42

Sheet pitch: 19

Width: 1520

Length: customized



NO: 9603

ITEM: Cross flow cooling tower film fill

Material: PVC

Thickness: 0.3-0.6

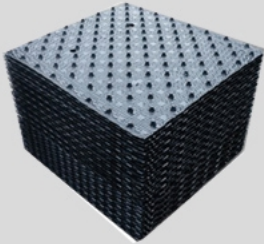
Density: 1.40-1.42

Sheet pitch: 20

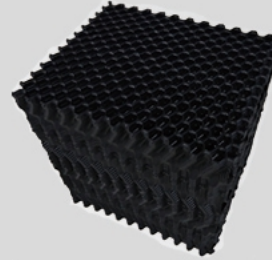
Width: 950

Length: 950,1270

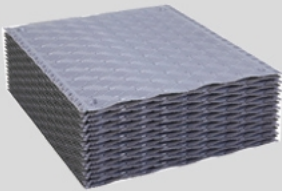




NO: 9604  
ITEM: Cross flow cooling tower film fill  
Material: PVC  
Thickness: 0.3-0.6  
Density: 1.40-1.42  
Sheet pitch: 20  
Width: 750  
Length: 800,1000,1200



NO: 9607  
ITEM: Counter flow cooling tower film fill  
Material: PVC  
Thickness: 0.3-0.6  
Density: 1.40-1.42  
Sheet pitch: 20  
Width: 500  
Length: customized



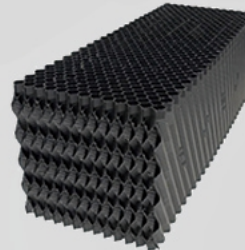
NO: 9605  
ITEM: Cross flow cooling tower film fill  
Material: PVC  
Thickness: 0.3-0.6  
Density: 1.40-1.42  
Sheet pitch: 16  
Width: 850,1000  
Length: 1000



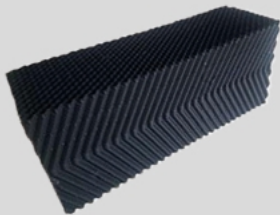
NO: 9608  
ITEM: Counter flow cooling tower film fill  
Material: PVC  
Thickness: 0.3-0.6  
Density: 1.40-1.42  
Sheet pitch: 20  
Width: 500  
Length: customized



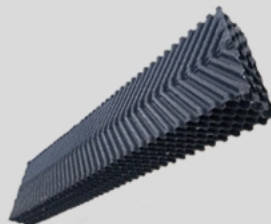
NO: 9606  
ITEM: Cross flow cooling tower film fill  
Material: PVC  
Thickness: 0.3-0.6  
Density: 1.40-1.42  
Sheet pitch: 19  
Width: 800  
Length: customized



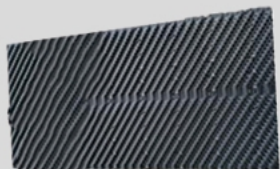
NO: 9609  
ITEM: Counter flow cooling tower film fill  
Material: PVC  
Thickness: 0.3-0.6  
Density: 1.40-1.42  
Sheet pitch: 15 or 19  
Width\*length: 305\*2stages\*1220  
305\*2stages\*1525  
225\*3stages\*customized



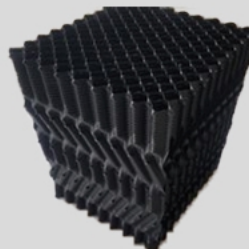
NO: 9610  
ITEM: Counter flow cooling tower film fill  
Material: PVC  
Thickness: 0.3-0.6  
Density: 1.40-1.42  
Sheet pitch: 12, 15, 19  
Width: 305, 610  
Length: customized



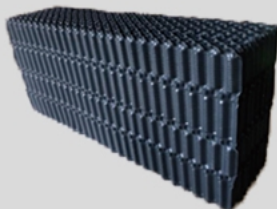
NO: 9613  
ITEM: Counter flow cooling tower film fill  
Material: PVC  
Thickness: 0.3-0.6  
Density: 1.40-1.42  
Sheet pitch: 30  
Width: 610  
Length: customized



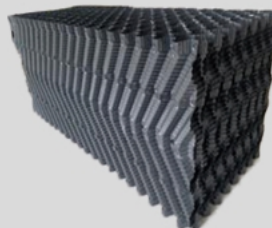
NO: 9611  
ITEM: Counter flow cooling tower film fill  
Material: PVC  
Thickness: 0.3-0.6  
Density: 1.40-1.42  
Sheet pitch: 12  
Width: 610  
Length: customized



NO: 9614  
ITEM: Counter flow cooling tower film fill  
Material: PVC  
Thickness: 0.3-0.6  
Density: 1.40-1.42  
Sheet pitch: 20  
Width: 500  
Length: customized

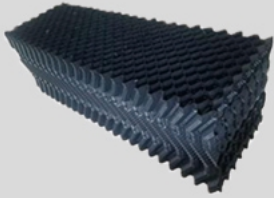


NO: 9612  
ITEM: Counter flow cooling tower film fill  
Material: PVC  
Thickness: 0.3-0.6  
Density: 1.40-1.42  
Sheet pitch: 20  
Width: 610\*2stages  
Length: customized

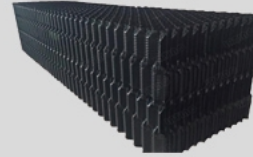


NO: 9615  
ITEM: Counter flow cooling tower film fill  
Material: PVC  
Thickness: 0.3-0.6  
Density: 1.40-1.42  
Sheet pitch: 34  
Width: 700 or 500\*2stages  
Length: customized





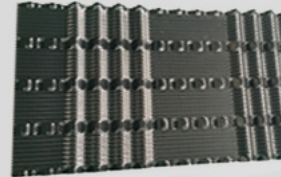
NO: 9616  
ITEM: Cross flow cooling tower film fill  
Material: PVC  
Thickness: 0.3-0.6  
Density: 1.40-1.42  
Sheet pitch: 35  
Width: 500  
Length: customized



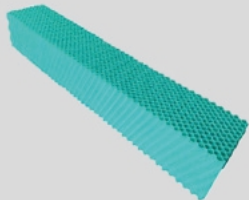
NO: 9619  
ITEM: Counter flow cooling tower film fill  
Material: PVC  
Typical Module length: 1998mm  
(n\* 55.5mm)  
Sheet pitch: 20mm  
Typical Module height: 500



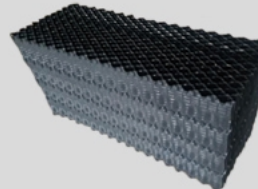
NO: 9617  
ITEM: Cross flow cooling tower film fill  
Material: PVC  
Thickness: 0.3-0.6  
Density: 1.40-1.42  
Sheet pitch: 15  
Width: 730  
Length: customized



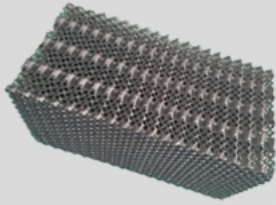
NO: 9620  
ITEM: Counter flow cooling tower film fill  
Material: PVC  
Typical Module length: 2032mm  
(n\* 508mm)  
Sheet pitch: 20mm  
Typical Module height: 500



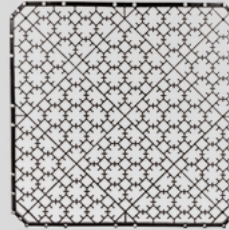
NO: 9618  
ITEM: Cross flow cooling tower film fill  
Material: PVC  
Thickness: 0.3-0.6  
Density: 1.40-1.42  
Sheet pitch: 19, 20  
Width: 300\*2stages  
Length: customized



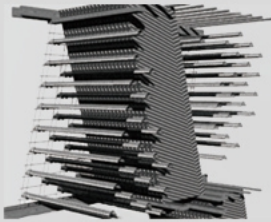
NO: 9621  
ITEM: Counter flow cooling tower film fill  
Material: PVC  
Typical Module length: 1998mm  
(n\* 55.5mm)  
Sheet pitch: 18mm  
Typical Module height: 500



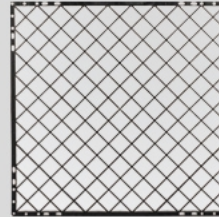
NO: 9622  
ITEM: Counter flow cooling tower film fill  
Material: PVC  
Typical Module length: 2000mm  
(n\* 50mm)  
Sheet pitch: 20mm  
Typical Module height: 500



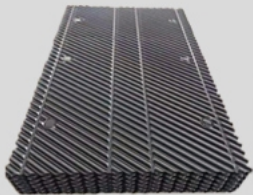
NO: 9625  
ITEM: Cooling Tower Fill- Grid Fill  
Material: PP  
Customized  
Size:750(705)\*750(705)\*24mm



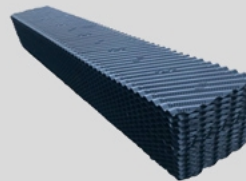
NO: 9623  
ITEM: Cooling Tower Fill- Splash Fill  
Material: PVC  
Customized Length: customized  
Sheet pitch: 60/45mm  
Width: 145/80mm



NO: 9626  
ITEM: Cooling Tower Fill- Grid Fill  
Material: PP  
Customized  
Size:750(705)\*750(705)\*24mm

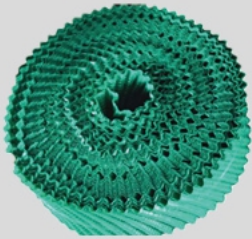


NO: 9624  
ITEM: Cross flow cooling tower film fill  
Material: PVC or PP  
Length: customized  
Sheet pitch: 19mm;  
Width: 610/915/1220mm

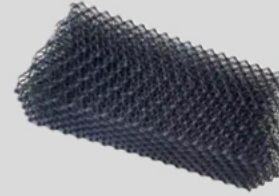


NO: 9627  
ITEM: Counter flow cooling tower film fill  
Material: PVC  
Thickness: 0.3-0.6  
Density: 1.40-1.45  
Sheet pitch: 12  
Width: 310\*2  
Length: customized





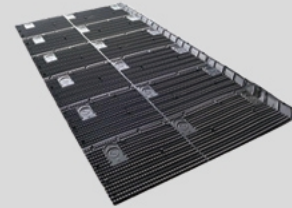
NO: 9628  
ITEM: Cooling tower film fill (civiltower)  
Material: PVC  
Thickness: 0.24-0.6  
Density: 1.40-1.45  
Sheet pitch: 15  
Width: 225/300  
Length: customized



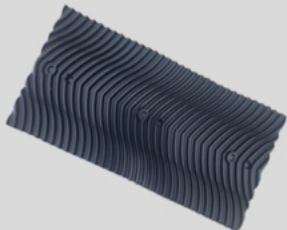
NO: 9631  
ITEM: Counter flow cooling tower film fill-Grid fill  
Material: PP  
Thickness: 2mm  
Sheet pitch: 20  
Width: 450  
Length: 900



NO: 9629  
ITEM: Cross flow cooling tower film fill  
Material: PVC  
Thickness: 0.24-0.6  
Density: 1.40-1.45  
Sheet pitch: 19  
Width: 1340  
Length: 610



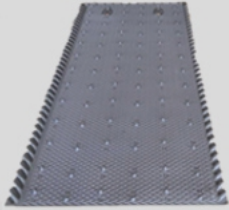
NO: 9632  
ITEM: Cross flow cooling tower film fill  
Thickness: 0.24-0.6  
Density: 1.40-1.45  
Sheet pitch: 19  
Width: 1330  
Length: customized



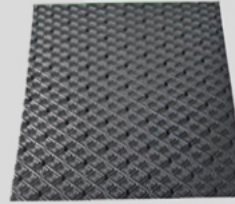
NO: 9630  
ITEM: Counter flow cooling tower film fill  
Material: PVC  
Thickness: 0.24-0.6  
Density: 1.40-1.45  
Sheet pitch: 12  
Width: 800/2  
Length: customized



NO: 9633  
ITEM: Cross flow cooling tower film fill  
Thickness: 0.24-0.6  
Density: 1.40-1.45  
Sheet pitch: 19  
Width: 1520 mm  
Length: customized



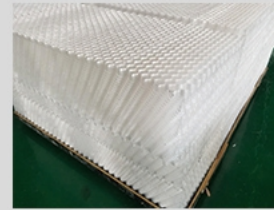
NO: 9634  
ITEM: Cross flow cooling tower film fill  
Thickness: 0.24-0.6  
Density: 1.40-1.45  
Sheet pitch: 16  
Width: 1000 mm  
Length: customized



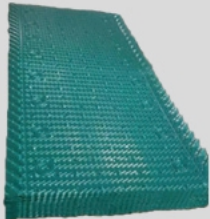
NO: 9637  
ITEM: Crosss flow cooling tower film fill  
Thickness: 0.24-0.6  
Density: 1.40-1.45  
Sheet pitch: 16  
Width: 885  
Length: 1060



NO: 9635  
ITEM: Counter flow cooling tower film fill  
Thickness: 0.24-0.6  
Density: 1.40-1.45  
Sheet pitch: 20  
Width: 300/600 mm  
Length: customized



NO: 9638  
ITEM: Counter flow cooling tower film fill  
Material: PP  
Thickness: 0.3-0.6  
Sheet pitch: 19  
Width: 305, 610  
Length: customized

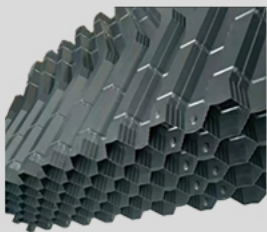


NO: 9636  
ITEM: Cross flow cooling tower film fill  
Thickness: 0.24-0.6  
Density: 1.40-1.45  
Sheet pitch: 19  
Width: 915/1220 mm  
Length: customized

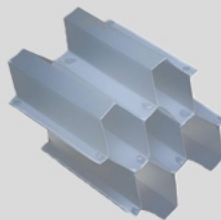


NO: 9639  
ITEM: Counter flow cooling tower film fill  
Material: PVC  
Thickness: 0.3-0.6  
Sheet pitch: 23/28  
Width: 600  
Length: customized

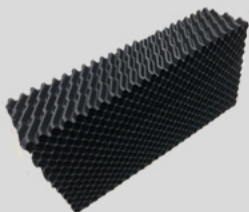




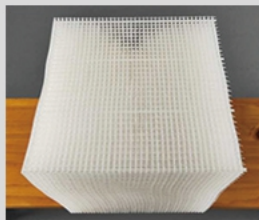
NO: 9640  
ITEM: Counter flow cooling tower film fill  
Material: PVC/PP  
Thickness: 0.4  
Sheet pitch: 35  
Width: 500  
Length: customized



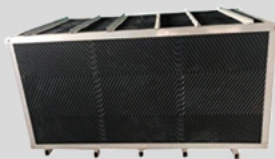
NO: 9643  
ITEM: Tuber Settler  
Material: PP/PVC  
Hole Size:30,35,50mm



NO: 9641  
ITEM: Counter flow cooling tower film fill  
Material: PP  
Thickness: 0.4  
Sheet pitch: 27  
Width: 300/600  
Length: customized



NO: 9644  
ITEM: Multi-layer Filter Block  
Material:PP  
305\*305\*305mm 40\*40\*40mm



NO: 9642  
ITEM: Cooling tower film fill  
Material: PVC  
Thickness: 0.3-0.6  
Sheet pitch: 12.7  
Width: 1435  
Length: 1435



NO: 9645  
ITEM: Cooling tower film fill  
Material:PVC  
Thickness: 0.3-0.6  
Sheet pitch: 17  
Width: 750/1000mm  
Length: customized

## Spray Nozzle

Cooling tower spray nozzle's function is to distribute the working fluid from the distribution pipe to the cooling tower fill uniformly as a thin film. The heat of working fluid is transferred by coil and become the saturated vapor when meet the working fluid and air. The heat is exhausted out of the tower by the tower by the top fan, working fluid is collected back to the bottom tank and circulates continuously.



NO: 9646

ITEM: Cooling tower film fill

Material: PVC

Thickness: 0.3-0.6mm

Sheet pitch: 19mm

Width: 1220mm

Length: customized



CASE





NO: 4601  
ITEM: Cooling Tower Spray Nozzle  
Material: PP  
Reflection-type



NO: 4604  
ITEM: Cooling Tower Spray Nozzle  
Material: ABS  
Snail nozzle



NO: 4602  
ITEM: Cooling Tower Spray Nozzle  
Material: ABS  
Spiral Target Nozzle



NO: 4605  
ITEM: Cooling Tower Spray Nozzle  
Material: ABS  
Spray Arm Extender Adapter+ EPDM  
Grommet+Band-it (Counterflow  
Distribution Assembly)



NO: 4603  
ITEM: Cooling Tower Spray Nozzle  
Material: PP/ABS  
Spiral Target Nozzle



NO: 4606  
ITEM: Cooling Tower Spray Nozzle  
Material: PP  
Threaded Spray Nozzles (General use  
in EVAPCO cooling towers and  
condensers)





NO: 4607  
ITEM: Cooling Tower Spray Nozzle  
Material: ABS  
Three Splashed Nozzle



NO: 4610  
ITEM: Cooling Tower Spray Nozzle  
Material: PP  
Spiral Target Nozzle



NO: 4608  
ITEM: Cooling Tower Spray Nozzle  
Material: PP  
Two layer basket Splashed Nozzle



NO: 4611  
ITEM: Cooling Tower Spray Nozzle  
Material: PP



NO: 4609  
ITEM: Cooling Tower Spray Nozzle  
Material: PP or PVC  
Brentwood cooling tower  
(Dek Spray Nozzle)



NO: 4612  
ITEM: Cooling Tower Spray Nozzle  
Material: ABS  
Rotating Basket Spray Nozzle



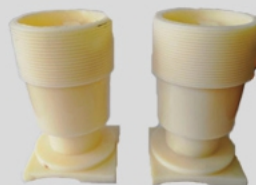
NO: 4613  
ITEM: Cooling Tower Spray Nozzle  
Material: ABS  
Upward vertical spray Nozzle



NO: 4616  
ITEM: Cooling Tower Spray Nozzle  
Material: PP/ABS



NO: 4614  
ITEM: Cooling Tower Spray Nozzle  
Material: PP/ABS



NO: 4617  
ITEM: Cooling Tower Spray Nozzle  
Material: PP/ABS



NO: 4615  
ITEM: Cooling Tower Spray Nozzle  
Material: PP/ABS



NO: 4618  
ITEM: Cooling Tower Spray Nozzle  
Material: PP/ABS



NO: 4619  
ITEM: Cooling Tower Spray Nozzle  
Material: PVC/ABS



NO: 4622  
ITEM: Cooling Tower Spray Nozzle  
Material: PVC/ABS  
φ25\*50mm



NO: 4620  
ITEM: Cooling Tower Spray Nozzle  
Material: PVC/ABS

**CASE**



NO: 4621  
ITEM: Cooling Tower Spray Nozzle  
Material: PVC/ABS  
76/85mm



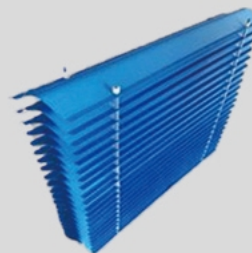


# Drift Eliminator

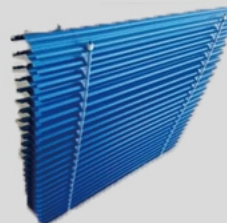
The drift eliminators system's function is to separate the liquid droplets contained in the vertical or horizontal air flows, and it could reduce the working fluid loss. If drift droplets contain the chemical and particulate matter, it could also reduce the detrimental effects on surrounding equipment and the environment by decreasing the drift droplets. LATINO' drift eliminators are specifically designed to achieve maximum drift removal efficiency in both crossflow and counterflow tower applications with various product options available to minimize pressure drop, drift loss, cost, or a combination of all above three aspects.

## Main Advantages

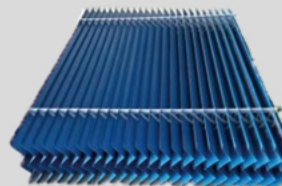
- Reduced environmental impact
- Low working fluid and recoverable
- Easy installment, maintenance
- Resistant against almost all chemical and biological agents



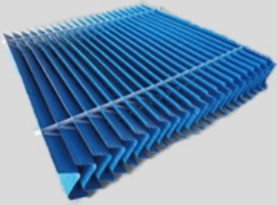
NO: 8601  
ITEM: Cooling tower drift eliminator  
Material: PVC  
Thickness: 0.8  
Interval: 50  
Sheet pitch: 50  
Width: 160  
Length: customized



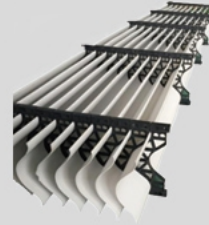
NO: 8602  
ITEM: Cooling tower drift eliminator  
Material: PVC  
Thickness: 0.8-1.0  
Interval: 45  
Sheet pitch: 45  
Width: 155  
Length: customized



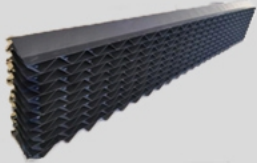
NO: 8603  
ITEM: Cooling tower drift eliminator  
Material: PVC  
Thickness: 0.8-1.0  
Interval: 40  
Sheet pitch: 40  
Width: 170  
Length: customized



NO: 8604  
ITEM: Cooling tower drift eliminator  
Material: PVC  
Thickness: 0.8-1.0  
Interval: 45  
Sheet pitch: 50  
Width: 170  
Length: customized



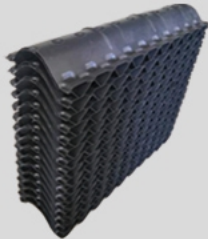
NO: 8607  
ITEM: Cooling tower drift eliminator  
Material: PVC  
Typical Size of Pannel:  
2000\*500\*177 mm



NO: 8605  
ITEM: Cooling tower drift eliminator  
Material: PVC  
Thickness: 0.4-0.6  
Interval: 30  
Sheet pitch: 30  
Width: 150\*2 stages  
Length: customized



NO: 8608  
ITEM: Cooling tower drift eliminator  
Material: PVC  
Customized



NO: 8606  
ITEM: Cooling tower drift eliminator  
Material: PVC  
Thickness: 0.3-0.6  
Interval: 20  
Sheet pitch: 20  
Width: 150\*2 stages  
Length: customized



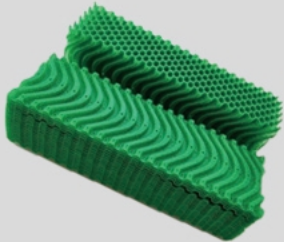
NO: 8609  
ITEM: Cooling tower drift eliminator  
Material: PP  
Thickness: 0.8-3.0  
Interval: 20-30mm  
Width: 165  
Length: customized



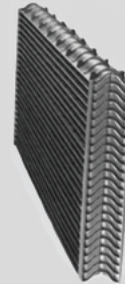
NO: 8610  
ITEM: Cooling tower drift eliminator  
Material: PVC  
Thickness: 0.8-3.0  
Interval: 35mm  
Width: 220  
Length: customized



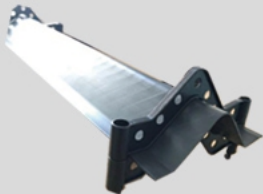
NO: 8613  
ITEM: Cooling tower drift eliminator  
Material: PVC  
Thickness: 0.25-0.45  
Interval: 25mm  
Width: 50  
Length: customized



NO: 8611  
ITEM: Cooling tower drift eliminator  
Material: PP  
Thickness: 0.8-3.0  
Interval: 10mm  
Width: 150  
Length: customized



NO: 8614  
ITEM: Cooling tower drift eliminator  
Material: PVC  
Thickness: 0.25-0.5  
Interval: 20mm  
Width: 145  
Length/ 长度: customized

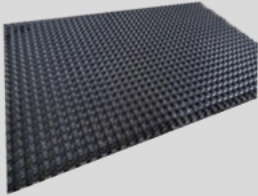


NO: 8612  
ITEM: Cooling tower drift eliminator  
Material: PVC+PP  
Thickness: 1.3  
Interval: 50mm  
Width: 170  
Length: customized

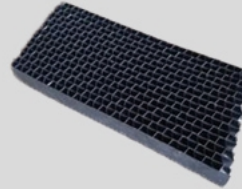


NO: 8615  
ITEM: Cooling tower drift eliminator  
Material: PVC  
Interval: 35mm  
Width: 155  
Length: customized





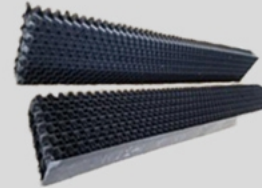
NO: 7601  
ITEM: water deflector  
Material: PVC  
Thickness: 0.5-0.6  
Sheet pitch: 20  
Width: 1100  
Length: customized



NO: 6601  
ITEM: water deflector (air inlet louver)  
Material: PVC  
Thickness: above 0.4/greater than 0.4  
Height: 400/500/600/  
A multiple of 20 /20 is multiple  
Sheet pitch: 20  
Width: 65\*2 stages  
Length: customized



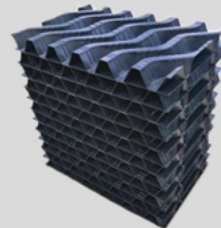
NO: 7602  
ITEM: water deflector  
Material: PVC  
Thickness: 0.5-0.6  
Sheet pitch: 20  
Width: 750  
Length: customized



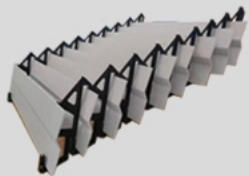
NO: 6602  
ITEM: water deflector (air inlet louver)  
Material: PVC  
Thickness: 0.4-0.6  
Height: 350/  
A multiple of 25/ 25 is multiple  
Sheet pitch: 25  
Width: 65\*2 stages  
Length: customized



NO: 7603  
ITEM: water deflector  
Material: PVC  
Thickness: 0.5-0.6  
Sheet pitch: 15  
Width: 1020  
Length: customized



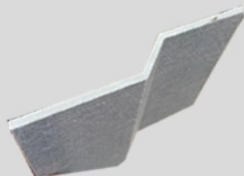
NO: 6603  
ITEM: water deflector (air inlet louver)  
Material: PVC  
Thickness: 0.4-0.6  
Interval: 25mm  
Width: 210  
Length: customized



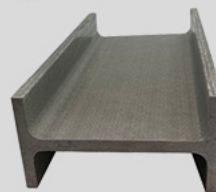
NO: 5601  
ITEM: Noise Attenuator  
Material: PVC  
Plate height: 166mm;  
Plate thicknes: 6mm;  
Platoh pitch: 111mm;



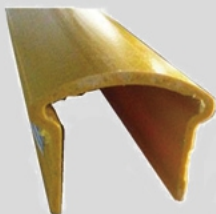
NO: 3602  
ITEM: Profile- H type  
Material: FRP Pultruded Profile  
Normal Specification or Based  
on the design



NO: 5602  
ITEM: Noise Attenuator  
Material: FRP Pultruded Profile  
Based on the design



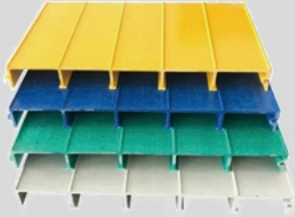
NO: 3603  
ITEM: Profile- I type  
Material: FRP Pultruded Profile  
Normal Specification or Based  
on the design



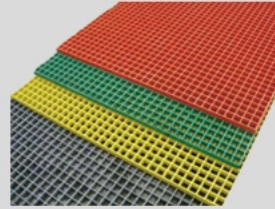
NO: 3601  
ITEM: FRP Recup- $\Omega$   
Material: FRP Pultruded Profile  
Based on the design



NO: 3604  
ITEM: Profile- Angle  
Material: FRP Pultruded Profile  
Based on the design



NO: 3605  
ITEM: Deck Panel  
Material: FRP Pultruded Profile  
Based on the design



NO: 3608  
ITEM: Grids  
Material: FRP Pultruded Profile  
Based on the design



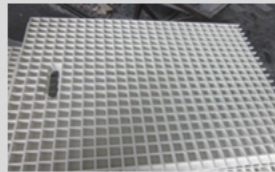
NO: 3606  
ITEM: Ladder  
Material: FRP Pultruded Profile  
Ladder Rung: 34\*25\*4.5mm  
or Based on the design



NO: 3609  
ITEM: Structural shapes  
Material: FRP Pultruded Profile  
Based on the design

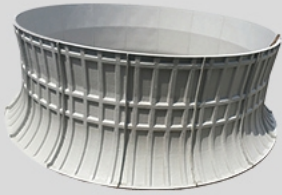


NO: 3607  
ITEM: Cage Ladder  
Material: FRP Pultruded Profile  
Based on the design



NO: 3610  
ITEM: Access Hatch  
Material: FRP Pultruded Profile  
Based on the design





NO: 3611  
ITEM: Fan Stack  
Material: Hand Lay-up FRP  
Based on the design



NO: 2601  
ITEM: Gluing Machine  
Material: AISI 304  
width: 500 mm



NO: 3612  
ITEM: Pipe  
Material: Axial winding FRP  
Axial winding  
Corrosion resistance  
pressure piping



NO: 2603  
ITEM: Extension Tube of Sprayer  
ITEM: PP  
Long size: 200mm;  
Standard length: 140mm



NO: 2604  
ITEM: Sprayer Ring  
ITEM: PP  
To match the different diameters  
of Distribution pipes:  
Dia.150/200/250/300/above



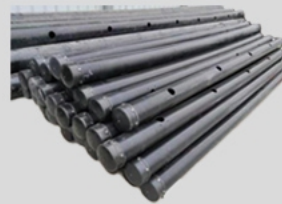
NO: 2605  
ITEM: Sprayer  
Material: PP  
Based on the design Size:  
Dia.16/20/22/24/26/27/28/  
29/30/31/32/33 /34/36/38



NO: 2608  
ITEM: Tension Wire and Wire Body  
Clamp with a set of Hex Cap-  
Lock screw  
Material: AISI 316  
Can be matched up between the Dia  
of wire and wire body clamp based on  
the design



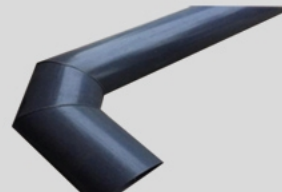
NO: 2606  
ITEM: Grid Support  
Material: PP  
Big size: 150\* 70mm;  
Standard size: 135\*60mm



NO: 2609  
ITEM: PVC Distribution Pipe  
Material: PVC  
Based on the design



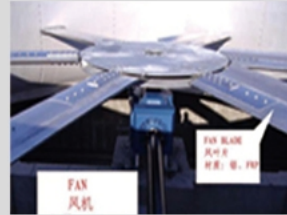
NO: 2607  
ITEM: Splash Fill Spacer  
(Spacing tube)  
Material: PP  
Inner hole: Dia. 4mm;  
Outer Dia: 12mm;  
length: 294mm/ 50mm/  
or specified requirement



NO: 2610  
ITEM: Welding Elbow for  
PVC Distribution Pipe  
Material: PVC  
Based on the design



NO: 2617  
ITEM: Slope sheet  
Material: PVC  
Based on the design



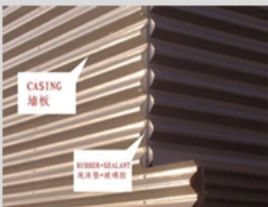
NO: 2629  
ITEM: Fan  
Material: Al Blade,  
FRP Pultruded Profile,  
Hand Lay-up FRP  
Based on the requirement



NO: 2626  
ITEM: Standard Parts  
Material: AISI 304  
Based on the requirement



NO: 2630  
ITEM: Motor  
Standard length: 140mm



NO: 2628  
ITEM: Casing and Rubber  
Material: FRP Pultruded Profile  
Based on the requirement



NO: 2632  
ITEM: Speed Reducer  
Based on the requirement



NO: 2633  
ITEM: Finned tube  
Material: Al Fins + Steel tube/  
Stainless steel tube  
Pitch: 11 FPI  
length and thickness:  
based on the design



NO: 2637  
ITEM: PVC Glue PVC



NO: 2635  
ITEM: Window blinds,  
ventilation  
Material: Aluminum alloy  
Mechanical



NO: 2638  
ITEM: Industry Cooling Tower  
Based on the design



NO: 2636  
ITEM: Spherical filler  
Material: PP  
Internal padding



NO: 2639  
ITEM: Cooling Tower  
Based on the design



## A complete set of service purchasing goods in China Market

We has a set of supplier evaluation and qualificaitn system and has a compeete datebase of qualified suppliers after the actural cooperation in more than 30 oversea projects; and our local experienced quality control team can manages all subsequent actions likes expedting, process quality control, inspection and delivery surveillance.

